

FREMANTLE PORTS NOTICE TO MARINERS

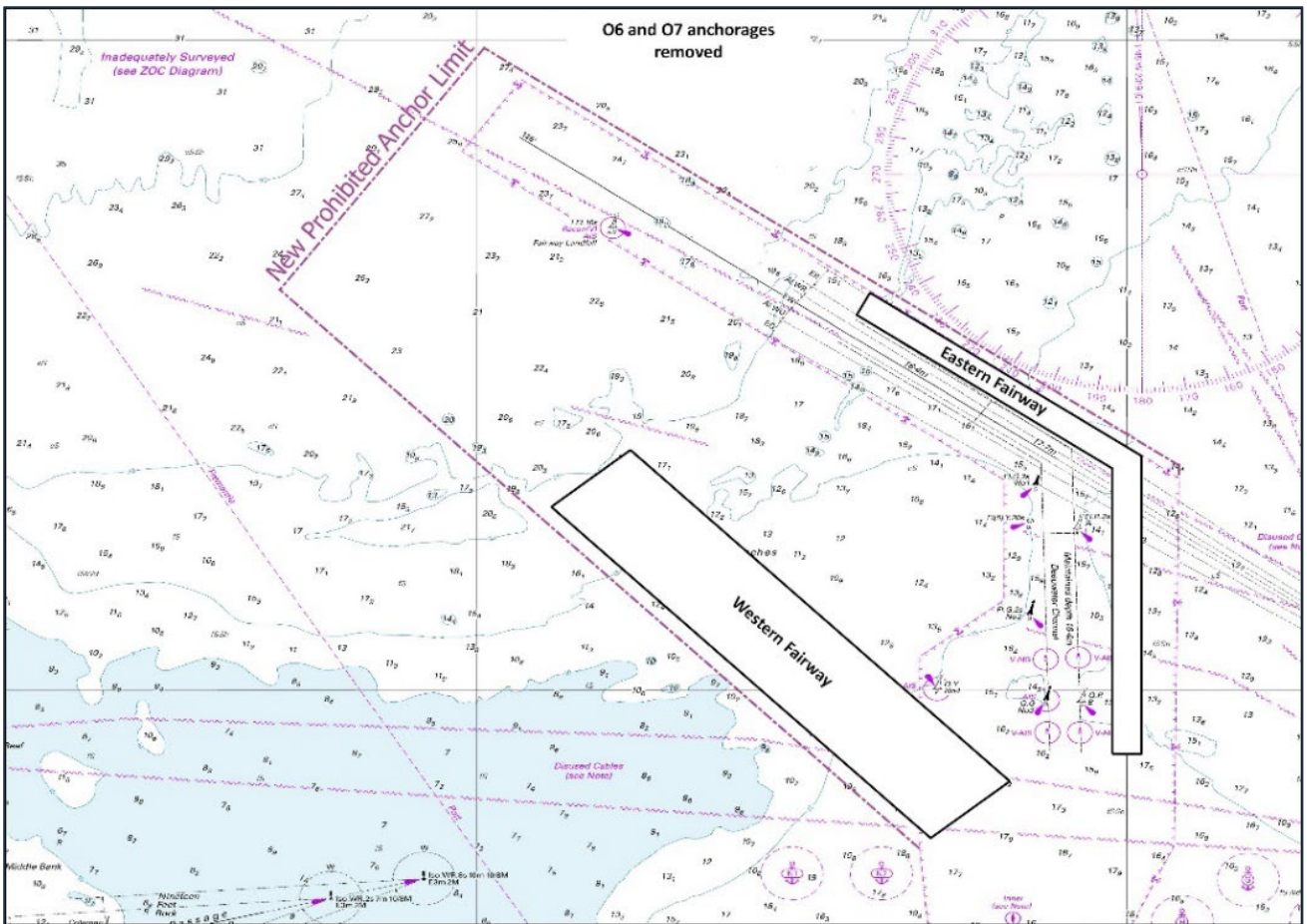
03/2024 Issued 23/02/2024

APPROACHES TO FREMANTLE

The following amendments to the Approaches to Fremantle are formally declared by Fremantle Ports and will come into force following the Australian Hydrographic Office's nautical chart release on March 1st 2024.

The amendments will be in accordance with the accompanying chartlet below and include:

1. Removal of both O6 and O7 Anchorages;
2. East Channel is renamed Eastern Fairway and extended north of Deepwater Channel. Dog leg is removed from southern extent. Eastern Fairway will appear on ENC cell AU5FRE01 and AUS 112 paper chart as a 0.15nm (280m) wide polygon. Eastern Fairway is only for use by vessels <11.0m draft;
3. Western Approaches is renamed Western Fairway. Western Fairway will appear on ENC cell AU5FRE01 and AUS 112 paper chart as a 0.54nm (1000m) wide polygon. Western Fairway is only for use by vessels <9.0m draft;
4. Prohibited anchor limit repositioned to incorporate Deepwater Channel, Eastern and Western Fairway limits.



These amendments will appear in latest version of Port Information Guide and include draft limits and recommended courses for new fairways.

Mariners are advised to navigate with caution.

Charts Permanently Affected RAN: Aus 112; AUS 754; DoT: WA 001

Sfernandes

Captain Savio Fernandes

Harbour Master

Fremantle Ports