

## Port of Fremantle Navigational Warning

**NAV-WARN #:** 15/2023  
**Date of issue:** 01.08.2023  
**Date of effect:** 01.08.2023  
**Effective until:** New Beacon Installed.  
**Charts affected:** AUS 117

### Cockburn Sound - Medina Channel C Beacon

Medina Channel C Beacon in position S 32.16501S 115.75880E has been damaged causing it to break and fall to the seabed due south of the above position. A temporary yellow marker buoy was initially placed in this location pending repairs as per Navigational Warning 14/2023.

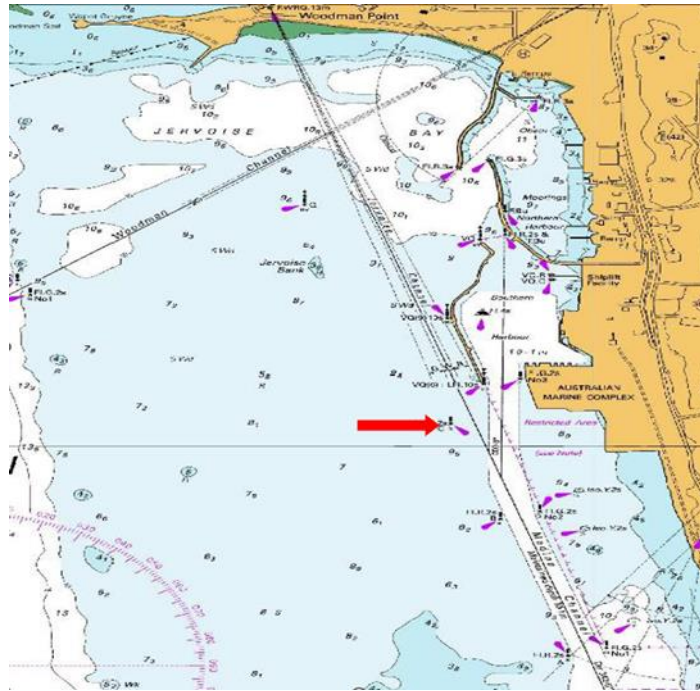
The temporary yellow buoy has now been replaced by a port marker "Shallow Buoy" with characteristics red FL2s.

This marker will stay in place until a pile beacon is installed.

Navigational Warning 15/2023 replaces Navigational Warning 14/2023 which is cancelled with immediate effect.



**Harbour Master's Office**  
**Fremantle Ports**



**Mariners are advised to navigate with caution when transiting the above area.**

**Harbour Master's Office  
Fremantle Ports**