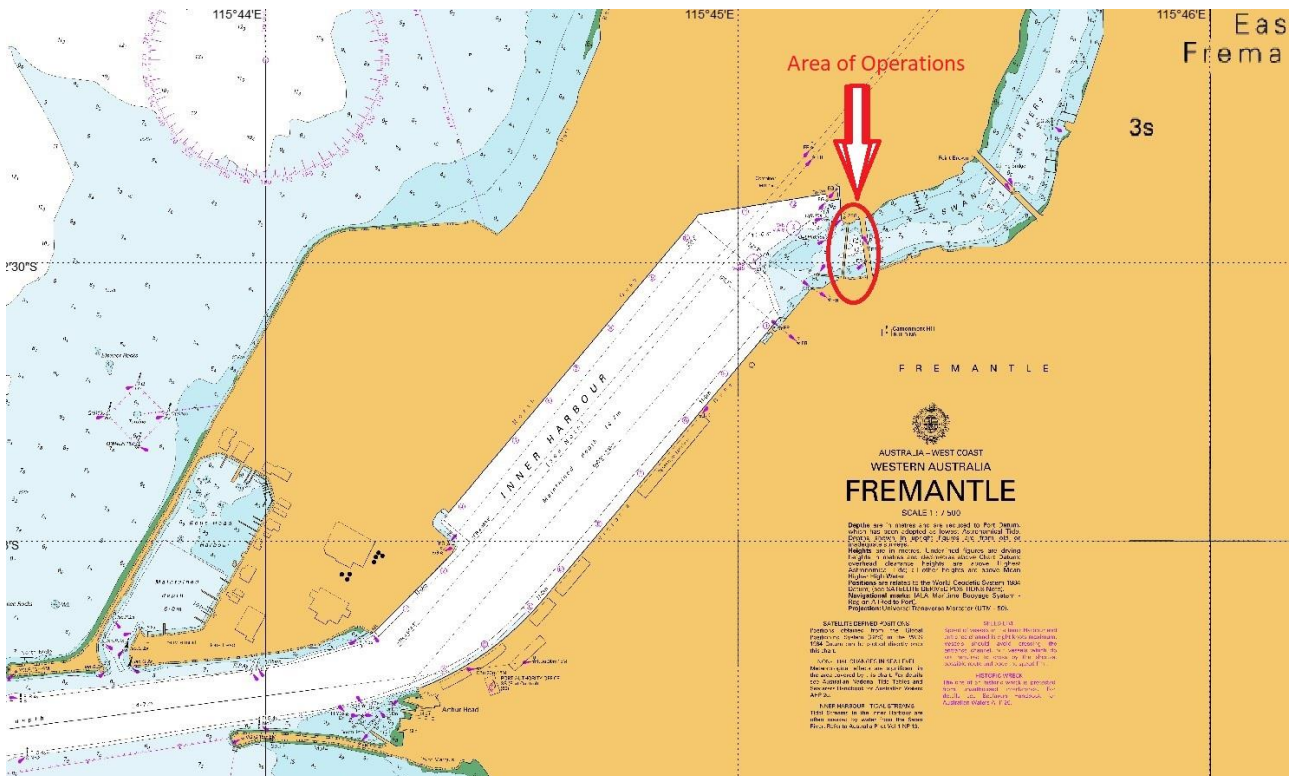


Port of Fremantle Navigational Warning

NAV-WARN #: 06/2024
Date of issue: 01.03.2024
Date of effect: 01.03.2024
Effective until: 01.12.2024
Charts affected: AUS 113

Geotechnical investigations and inspections, Fremantle Traffic and Rail Bridges, Swan River.

Mariners are advised that geotechnical works and inspections will take place within the Swan River in the vicinity of the Fremantle Rail Bridge and the Fremantle Traffic Bridge. Works will be active to approximately mid-April 2024. These works are important in retrieving soil samples used to inform the Swan River Crossings Project. Works will be undertaken during daylight hours.



**Harbour Master's Office
Fremantle Ports**

Navigational channels will remain open wherever possible. Intermittent delays to navigation of one navigational channel at a time may be required to facilitate safe movement of work vessels.

Borehole drilling operations will be conducted from a jack-up barge. The barge will be required to move to various locations in the vicinity of the two bridges. The barge movements are anticipated to occur every 3 to 4 days. The jack-up barge will remain on location outside of work hours.

Inspections will take place on vessels passing through the river to gather information on the Rail Bridge, Fremantle Traffic Bridge, Finger Jetty, East Street Jetties, Jetty North of East Street and Wharf South of Rail Bridge. They will involve the vessels passing between structures and stopping for periods of time.

The jack-up barge and all vessels taking part in the works will display shapes and lights in accordance with the Prevention of Collisions at Sea Regulations 1983 at all times.

Spotter vessels will always be present to assist in traffic management whilst works are occurring. The spotter vessel will be clearly marked and monitoring VHF Channels 16 and using VHF channel 9 as a working frequency for vessel to vessel communications. All vessels navigating through the bridges are encouraged to contact the spotter vessel prior to approaching the bridges.

Call Signs - Spotter Vessel 1 - upstream; Spotter Vessel 2 - downstream

For further information on these works please visit Main Roads link below or contact 138 138 [Swan River Crossings | Main Roads Western Australia](#)

Chart reference: Department of Transport chart 898 - Swan and Canning Rivers

Mariners are advised to navigate with caution, reduce wake and wash and observe all signage when transiting through the area.

**Harbour Master's Office
Fremantle Ports**